



# PRINTBASE TEXTILES



*DIGITALLY PRINTABLE MEDIA*



Printbase Textiles has been the leading distributor and manufacturer of digitally printable textiles on the African continent over the last 15 years.

Our entire product range is produced at our factory at 1 Cochrane Avenue, Epping 1, Cape Town by highly skilled technicians with many years of textile production expertise.

Printbase Textiles is the only vertically integrated textile mill that knits, coats and finishes from yarn to roll purely for the digital print industry.

Printbase Textiles offers an extensive range of fabrics in finishes suitable for Eco Solvent, Full Solvent, Latex, Dye Sublimation Paper Transfer, Dye Sublimation Direct and UV Cure printing options.

Printbase Textiles is a proudly South African company with level 4 B-BBEE certification.

---

### WHY PRINTBASE WARP KNIT DIGITALLY PRINTABLE TEXTILES.

Combining warp knitted fabrics produced on Karl Mayer knitting machines using high filament count polyester yarns with state of the art European finishing chemicals and process routes gives Printbase Textiles the edge when it comes to superior quality.

Printbase Textiles warp knitted fabrics do not fray during the cut, make and trim process (CMT) and remain pliable and malleable after printing making production turnaround times quicker for seamstresses.

Our warp knitted fabric and finish routes result in vibrant prints and minimize the chance of white cracking and ink abrasion after printing.

Unlike most imported fabrics every meter produced at Printbase Textiles is inspected and all faults are removed, minimizing the chance of print rejects.

Printbase Textiles warp knitted fabrics are the media of choice of selected European and USA based distributors of digitally printable fabrics.





**Key:**

**Print Methods**

These icons indicate print type most suitable for the textile



**Eco Solvent**



**Dye Sublimation Direct**



**UV Cure**



**Dye Sublimation Paper**



X-FRAMES



A-FRAMES



TEX-FRAMES

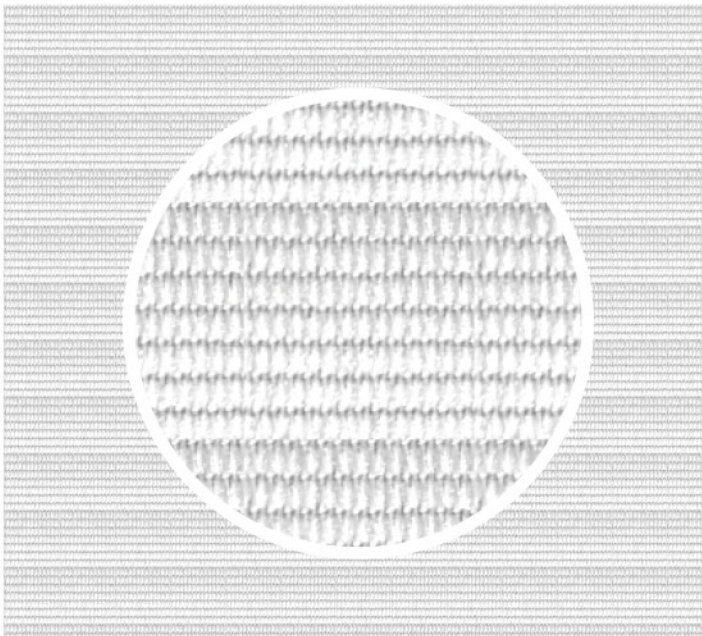


## FOB211

PRODUCT SPECIFICATIONS	
Quality:	FOB211 Black Back
Description:	Textile with Black Backing / Blockout
Finish	-
Composition:	100% Polyester
Widths:	160cm ; 320cm
Mass:	240g/m <sup>2</sup>
Colour:	WH001
Print Route:	<div style="display: flex; gap: 10px;"> <div style="background-color: #4CAF50; color: white; border-radius: 50%; width: 30px; height: 30px; display: flex; align-items: center; justify-content: center;">DSP</div> <div style="background-color: #4CAF50; color: white; border-radius: 50%; width: 30px; height: 30px; display: flex; align-items: center; justify-content: center;">DSD</div> </div>
<ul style="list-style-type: none"> <li>• 1-3% stretch • Matt finish • White with black backing</li> <li>• PVCfree • Soft handle • Non fraying / cold cutting • Flame Retardant</li> </ul>	

## FSA211

PRODUCT SPECIFICATIONS	
Quality:	FSA211
Description:	Textile with Black Backing / Blockout
Finish	Double Coated
Composition:	100% Polyester
Widths:	160cm ; 320cm
Mass:	240g/m <sup>2</sup>
Colour:	WH001
Print Route:	<div style="display: flex; gap: 10px;"> <div style="background-color: #9C27B0; color: white; border-radius: 50%; width: 30px; height: 30px; display: flex; align-items: center; justify-content: center;">UV</div> </div>
<ul style="list-style-type: none"> <li>• 1-3% stretch • Matt finish • White with black backing</li> <li>• PVCfree • Soft handle • Non fraying / cold cutting • Flame Retardant</li> </ul>	



Designed specifically for exhibitions and display environments, FOB211 features a deep black backing that eliminates light bleed and structure shadowing, delivering bold, professional graphics under any lighting conditions.

### IDEAL FOR:

- EXHIBITION STANDS • FABRIC FRAMES
- BACKDROPS • DISPLAY WALLS • POP-UP SYSTEMS

### Print width:





# Printex™ Wallcovering Fabric

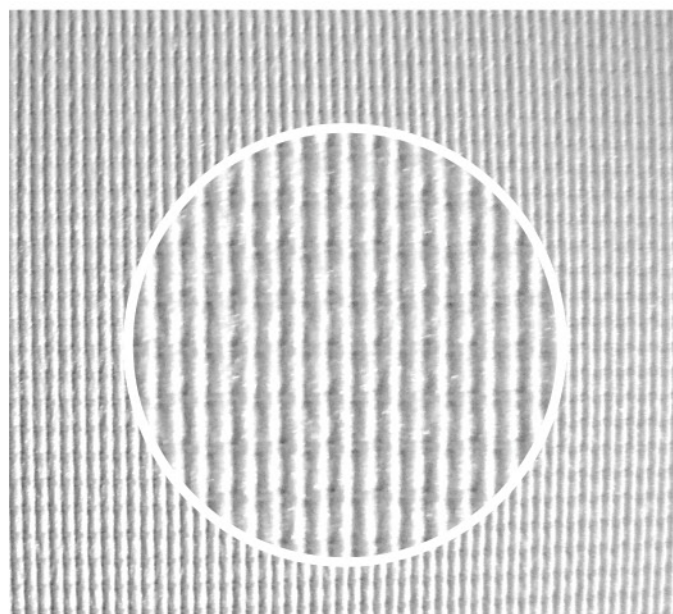


WALL COVERING



## FWD216ULS PRO

PRODUCT SPECIFICATIONS	
Quality:	FWD216ULS PRO
Finish	Flame Retardant and Water Repellent Coating
Composition	100% Polyester
Description	Wall covering
Widths	160cm, 260cm, 320cm
Mass	315g/m <sup>2</sup>
Colour	WH001
Print Route	 
Features & Benefits:	<ul style="list-style-type: none"> <li>• PVC Free</li> <li>• High abrasion resistance</li> <li>• Non fraying/ cold cut</li> <li>• Water and soil repellent</li> </ul>



Seamless wall covering fabric with grey blockout back. No need to prepare wall surfaces by pre painting white. Simply clean wall and apply fabric over existing colour. Treated with water repellent and flame retardant finishes to European standard DIN 4102 Level B1 or American standard ASTM E84.

### Print widths:



### Perfect for:



- WALLPAPER
- WALL COVERING
- SURFACE COVER

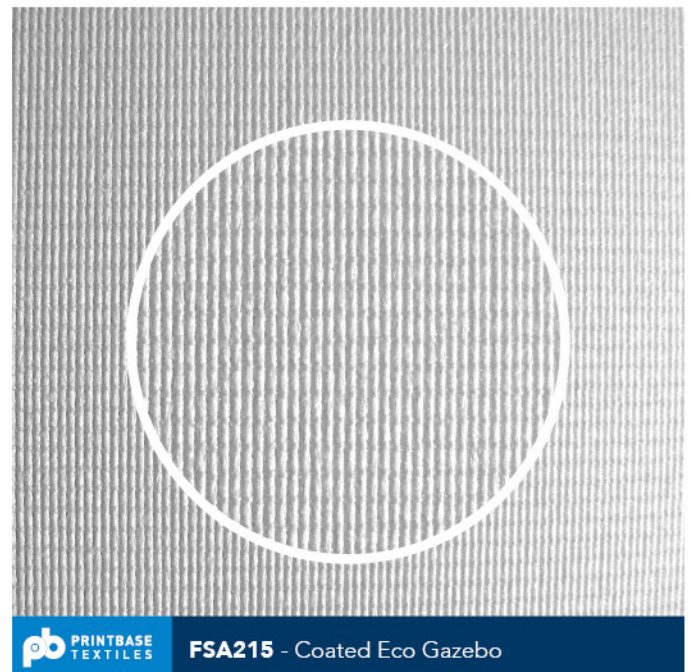


# Printex™ Coated Eco Gazebo



## FSA215

PRODUCT SPECIFICATIONS	
Quality:	FSA215
Finish	OBA Acrylic (Optical Brightening Agent)
Composition	100% Polyester
Description	Single acrylic coated gazebo fabric
Widths	160cm, 260cm, 320cm
Mass	250g/m <sup>2</sup>
Colour	WH001
Print Route	 
Features & Benefits:	<ul style="list-style-type: none"> <li>•PVC Free</li> <li>•High abrasion resistance</li> <li>•High tensile strength</li> <li>•Non Fraying/ cold cut</li> <li>•Water and soil repellent</li> </ul>
Note	Flame retardant finish available on request



Flexible single acrylic coat gives good ink adhesion and prevents white cracking when folded. Is a great option for high traffic areas - Scratch Guard. Colours are bright and vibrant

### Print widths:



### Perfect for:

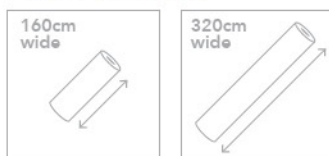
- A-FRAMES • X-FRAMES • GAZEBOS • LIGHT BOXES
- INTERIORS/SOFT • FURNISHINGS



## FWD241 - Linen

PRODUCT SPECIFICATIONS	
Quality:	FWD241 - Linen
Description:	Linen Fabric Wall Covering with Grey Back
Wallcovering Type:	Type 2 - High Trafficked and Commercial Spaces
Finish	Matt Acrylic
Composition:	100% Polyester
Construction:	Polyester with acrylic fabric grey back
Fire Rating:	On Special Request
Anti Microbial:	Not Suitable in wet areas
Colour Fastness:	Excellent Adhesion - Subject to UV and Sublimation Process
Widths:	320cm / 160cm
Thickness:	2mm
Mass:	338g/m <sup>2</sup>
Colour:	Natural Chalk White
Print Route:	 

### Print widths:

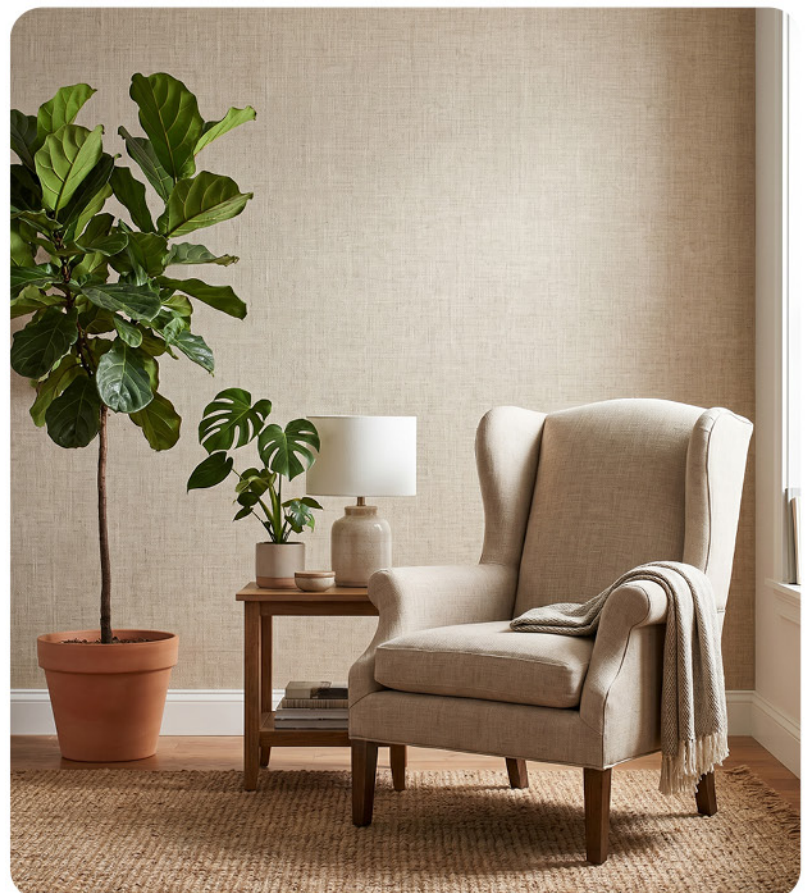


The seamless application creates an elegant, continuous finish that elevates every space. Combining enduring resilience with striking visual appeal.

This premium wall covering is the ideal choice for interiors that demand both luxury and long-lasting performance

### Perfect for:

- HOTELS • CORPORATE OFFICES
- RETAIL SHOWROOMS • UPSCALE RESIDENCES





Email: [exports@pbtex.co.za](mailto:exports@pbtex.co.za)  
Mobile: +27 61 538 1809

1 Cochrane Avenue, Epping 1,  
Cape Town, 7530

[www.pbtex.co.za](http://www.pbtex.co.za)