

Printex™ BLACK BACK



X-FRAMES



A-FRAMES



TEX-FRAMES

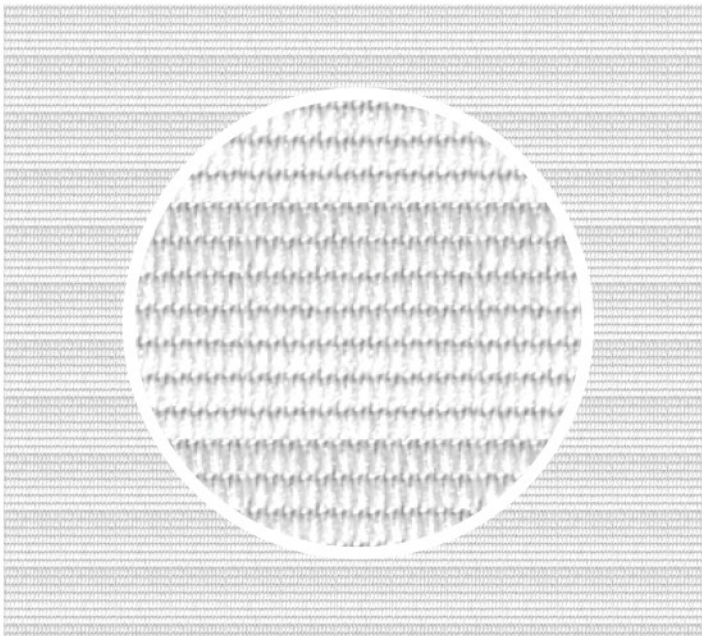


FOB211

PRODUCT SPECIFICATIONS	
Quality:	FOB211 Black Back
Description:	Textile with Black Backing / Blockout
Finish	-
Composition:	100% Polyester
Widths:	160cm ; 320cm
Mass:	240g/m ²
Colour:	WH001
Print Route:	<div style="display: flex; gap: 10px;"> <div style="background-color: #4CAF50; color: white; border-radius: 50%; width: 30px; height: 30px; display: flex; align-items: center; justify-content: center;">DSP</div> <div style="background-color: #4CAF50; color: white; border-radius: 50%; width: 30px; height: 30px; display: flex; align-items: center; justify-content: center;">DSD</div> </div>
<ul style="list-style-type: none"> • 1-3% stretch • Matt finish • White with black backing • PVCfree • Soft handle • Non fraying / cold cutting • Flame Retardant 	

FSA211

PRODUCT SPECIFICATIONS	
Quality:	FSA211
Description:	Textile with Black Backing / Blockout
Finish	Double Coated
Composition:	100% Polyester
Widths:	160cm ; 320cm
Mass:	240g/m ²
Colour:	WH001
Print Route:	<div style="display: flex; gap: 10px;"> <div style="background-color: #9C27B0; color: white; border-radius: 50%; width: 30px; height: 30px; display: flex; align-items: center; justify-content: center;">UV</div> </div>
<ul style="list-style-type: none"> • 1-3% stretch • Matt finish • White with black backing • PVCfree • Soft handle • Non fraying / cold cutting • Flame Retardant 	



Designed specifically for exhibitions and display environments, FOB211 features a deep black backing that eliminates light bleed and structure shadowing, delivering bold, professional graphics under any lighting conditions.

IDEAL FOR:

- EXHIBITION STANDS • FABRIC FRAMES
- BACKDROPS • DISPLAY WALLS • POP-UP SYSTEMS

Print width:

